

DU JAT BMS BBA N BA Business Economics 01

Topic:- JAT01 S2_P2

1) Read the passage below carefully.

Six boys are sitting in a circle. Sameer is sitting opposite to Ramesh. Parth is sitting to the right of Ramesh but left of Deepak. Manjit is sitting left of Ramesh. Kapil is sitting right of Sameer and left of Manjit. Now Deepak and Kapil, Manjit and Ramesh mutually exchange their positions.

Who will be sitting opposite to Manjit?

[Question ID = 11422]

1. Sameer

[Option ID = 45682]

2. Ramesh

[Option ID = 45683]

3. Kapil

[Option ID = 45684]

4. Deepak

[Option ID = 45685]

Correct Answer :-

- Sameer

[Option ID = 45682]

2) Read the passage below carefully.

Six boys are sitting in a circle. Sameer is sitting opposite to Ramesh. Parth is sitting to the right of Ramesh but left of Deepak. Manjit is sitting left of Ramesh. Kapil is sitting right of Sameer and left of Manjit. Now Deepak and Kapil, Manjit and Ramesh mutually exchange their positions.

Who will be sitting left of kapil?

[Question ID = 11423]

1. Deepak

[Option ID = 45686]

2. Parth

[Option ID = 45687]

3. Ramesh

[Option ID = 45688]

4. Sameer

[Option ID = 45689]

Correct Answer :-

- Parth

[Option ID = 45687]

3) Read the passage below carefully.

Six boys are sitting in a circle. Sameer is sitting opposite to Ramesh. Parth is sitting to the right of Ramesh but left of Deepak. Manjit is sitting left of Ramesh. Kapil is sitting right of Sameer and left of Manjit. Now Deepak and Kapil, Manjit and Ramesh mutually exchange their positions.

Who will be sitting left to Parth?

[Question ID = 11424]

1. Sameer

[Option ID = 45690]

2. Manjit

[Option ID = 45691]

3. Ramesh

[Option ID = 45692]

4. Deepak

[Option ID = 45693]

Correct Answer :-

- Manjit

[Option ID = 45691]

Topic:- JAT01 S2_P3

1) Read the passage below very carefully.

In an auditorium the first five front row seats are reserved for VIPs. Let's name them VIP 1, VIP 2, VIP 3, VIP 4, and VIP 5. They are wearing traditional Yellow, Green, Purple, Red and Blue kurtas, but not in the same order. The name of the VIPs are Yudhistir, Bheem, Arjun, Nakul, and Sahdev, again not in any particular order. The organizer can recognise the VIPs from the color of their kurtas. - The VIP in the first seat is wearing a red kurta. - The VIP wearing a blue kurta is seated between the VIPs wearing red and green kurta. - The VIP in the fifth seat is wearing a purple kurta. - The VIP 4 wears a yellow kurta. - Yudhistir is seated next to Nakul. - Sahdev wears a green kurta. - Bheem is sitting between Arjun and Sahdev. - Nakul is on the fifth seat. Who is VIP 4?

[Question ID = 11426]

1. Yudhistir

[Option ID = 45698]

2. Bheem

[Option ID = 45699]

3. Arjun

[Option ID = 45700]

4. Sahdev

[Option ID = 45701]

Correct Answer :-

- Yudhistir

[Option ID = 45698]

2) Read the passage below very carefully.

In an auditorium the first five front row seats are reserved for VIPs. Let's name them VIP 1, VIP 2, VIP 3, VIP 4, and VIP 5. They are wearing traditional Yellow, Green, Purple, Red and Blue kurtas, but not in the same order. The name of the VIPs are Yudhistir, Bheem, Arjun, Nakul, and Sahdev, again not in any particular order. The organizer can recognise the VIPs from the color of their kurtas. - The VIP in the first seat is wearing a red kurta. - The VIP wearing a blue kurta is seated between the VIPs wearing red and green kurta. - The VIP in the fifth seat is wearing a purple kurta. - The VIP 4 wears a yellow kurta. - Yudhistir seated next to Nakul. - Sahdev wears a green kurta. - Bheem is sitting between Arjun and Sahdev. - Nakul is on the fifth seat. Who is seated on the first seat?

[Question ID = 11427]

1. Yudhistir

[Option ID = 45702]

2. Bheem

[Option ID = 45703]

3. Arjun

[Option ID = 45704]

4. Sahdev

[Option ID = 45705]

Correct Answer :-

- Arjun

[Option ID = 45704]

3) Read the passage below very carefully.

In an auditorium the first five front row seats are reserved for VIPs. Let's name them VIP 1, VIP 2, VIP 3, VIP 4, and VIP 5. They are wearing traditional Yellow, Green, Purple, Red and Blue kurtas, but not in the same order. The name of the VIPs are Yudhistir, Bheem, Arjun, Nakul, and Sahdev, again not in any particular order. The organizer can recognise the VIPs from the color of their kurtas. - The VIP in the first seat is wearing a red kurta. - The VIP wearing a blue kurta is seated between the VIPs wearing red and green kurta. - The VIP in the fifth seat is wearing a purple kurta. - The VIP 4 wears a yellow kurta. - Yudhistir is seated next to Nakul. - Sahdev wears a green kurta. - Bheem is sitting between Arjun and Sahdev. - Nakul is on the fifth seat.

What is the color of the kurta of VIP 1?

[Question ID = 11428]

1. Yellow
[Option ID = 45706]
2. Green
[Option ID = 45707]
3. Purple
[Option ID = 45708]
4. Red
[Option ID = 45709]

Correct Answer :-

- Red
[Option ID = 45709]

4) Read the passage below very carefully..

In an auditorium the first five front row seats are reserved for VIPs. Let's name them VIP 1, VIP 2, VIP 3, VIP 4, and VIP 5. They are wearing traditional Yellow, Green, Purple, Red and Blue kurtas, but not in the same order. The name of the VIPs are Yudhistir, Bheem, Arjun, Nakul, and Sahdev, again not in any particular order. The organizer can recognise the VIPs from the color of their kurtas. - The VIP in the first seat is wearing a red kurta. - The VIP wearing a blue kurta is seated between the VIPs wearing red and green kurta. - The VIP in the fifth seat is wearing a purple kurta. - The VIP 4 wears a yellow kurta. - Yudhistir is seated next to Nakul. - Sahdev wears a green kurta. - Bheem is sitting between Arjun and Sahdev. - Nakul is on the fifth seat.

Who is seated between VIP 2 and VIP 4?

[Question ID = 11429]

1. Yudhistir
[Option ID = 45710]
2. Bheem
[Option ID = 45711]
3. Arjun
[Option ID = 45712]
4. Sahdev
[Option ID = 45713]

Correct Answer :-

- Sahdev
[Option ID = 45713]

5) Read the passage below very carefully.

In an auditorium the first five front row seats are reserved for VIPs. Let's name them VIP 1, VIP 2, VIP 3, VIP 4, and VIP 5. They are wearing traditional Yellow, Green, Purple, Red and Blue kurtas, but not in the same order. The name of the VIPs are Yudhistir, Bheem, Arjun, Nakul, and Sahdev, again not in any particular order. The organizer can recognise the VIPs from the color of their kurtas. - The VIP in the first seat is wearing a red kurta. - The VIP wearing a blue kurta is seated between the VIPs wearing red and green kurta. - The VIP in the fifth seat is wearing a purple kurta. - The VIP 4 wears a yellow kurta. - Yudhistir is seated next to Nakul. - Sahdev wears a green kurta. - Bheem is sitting between Arjun and Sahdev. - Nakul is on the fifth seat. Arjun and Nakul swapped their seats and then Yudhistir and Bheem swapped their seats.

What is the color sequence of the kurtas from seat 1 to seat 5?

[Question ID = 11430]

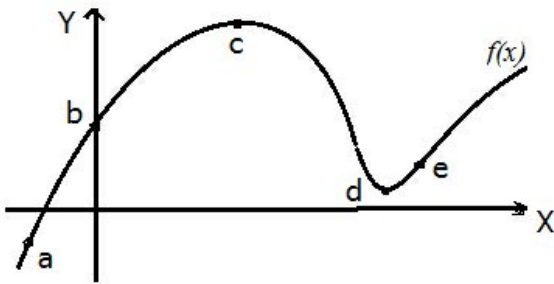
1. Red, Blue, Green, Yellow, Purple
[Option ID = 45714]
2. Purple, Yellow, Green, Blue, Red
[Option ID = 45715]
3. Blue, Green, Yellow, Red, Purple
[Option ID = 45716]
4. Green, Red, Blue, Purple, Yellow
[Option ID = 45717]

Correct Answer :-

- Purple, Yellow, Green, Blue, Red

Topic:- JAT01 S2_P4

1) The figure provided below depicts the function $f(x)$. The values a, b, c, d and e are of the abscissa of the points shown in the figure. Decide which of the statements provided in the options is true?



[Question ID = 11432]

1. $f(a)=0$; $f'(a)>0$; $f''(a)<0$

[Option ID = 45722]

2. $f(a)>0$; $f'(a)>0$; $f''(a)<0$

[Option ID = 45723]

3. $f(a)<0$; $f'(a)<0$; $f''(a)>0$

[Option ID = 45724]

4. $f(a)<0$; $f'(a)>0$; $f''(a)<0$

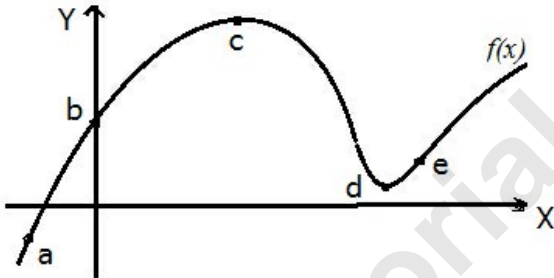
[Option ID = 45725]

Correct Answer :-

• $f(a)<0$; $f'(a)>0$; $f''(a)<0$

[Option ID = 45725]

2) The figure provided depicts the function $f(x)$. The values a, b, c, d and e are of the abscissa of the points shown in the figure. Decide which of the statements provided in the options is true?



[Question ID = 11433]

1. 'e' is a stationary point [Option ID = 45726]

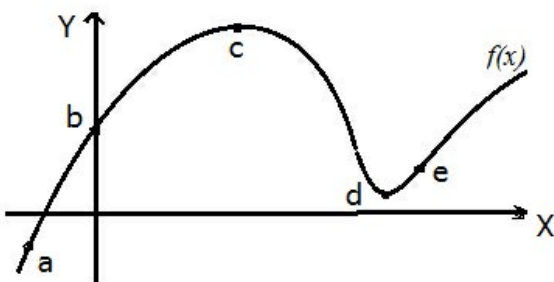
2. 'e' is a point of inflexion [Option ID = 45727]

3. $f(x)$ is decreasing at 'e' [Option ID = 45728]4. The ordinate of $f(x)$ is negative at 'e' [Option ID = 45729]

Correct Answer :-

• 'e' is a point of inflexion [Option ID = 45727]

3) The figure provided depicts the function $f(x)$. The values a, b, c, d and e are of the abscissa of the points shown in the figure. Decide which of the statements provided in the options is true?



[Question ID = 11434]

1. $f(b)>0$; $f'(c)=0$; $f''(d) < 0$

[Option ID = 45730]

2. $f'(b) > 0$; $f''(c) = 0$; $f(d) > 0$

[Option ID = 45731]

3. $f''(b) < 0$; $f(c) > 0$; $f'(d) = 0$

[Option ID = 45732]

4. $f''(b) < 0$; $f(c) > 0$; $f'(d) = 0$

[Option ID = 45733]

Correct Answer :- "Question to be deleted"

Topic:- JAT01 S2_P1

1) In the following options, three out of the four are same in a certain way to form a group. Find the odd one:

[Question ID = 11436]

1. 27 [Option ID = 45738]

2. 64 [Option ID = 45739]

3. 15 [Option ID = 45740]

4. 50 [Option ID = 45741]

Correct Answer :-

• 27 [Option ID = 45738]

2) In the following options, three out of the four are same in a certain way to form a group. Find the odd one:

[Question ID = 11437]

1. DFIM [Option ID = 45742]

2. PRUX [Option ID = 45743]

3. OQTX [Option ID = 45744]

4. JLOS [Option ID = 45745]

Correct Answer :-

• PRUX [Option ID = 45743]

3) Find the alternative which will replace the question mark.

K/T: 16/20 :: J/R : ?

[Question ID = 11438]

1. 17/18 [Option ID = 45746]

2. 10/18 [Option ID = 45747]

3. 10/9 [Option ID = 45748]

4. 17/9 [Option ID = 45749]

Correct Answer :-

• 17/18 [Option ID = 45746]

4) Find the alternative which will replace the question mark:

JRKN: NNNK:: AYWD : ?

[Question ID = 11439]

1. EUZA [Option ID = 45750]

2. DDDW [Option ID = 45751]

3. ECAH [Option ID = 45752]

4. EUAZ [Option ID = 45753]

Correct Answer :-

• EUZA [Option ID = 45750]

5) If a certain language HEIGHT is coded as HGHEIT, what would be the code for the word REMOTE ?

[Question ID = 11440]

1. EOERMT [Option ID = 45754]

2. ROTEME [Option ID = 45755]

3. RTOME [Option ID = 45756]

4. RMETOE [Option ID = 45757]

Correct Answer :-

• ROTEME [Option ID = 45755]

6) Given that

$$2^0 \square 2^1 \square 2^2 \square 2^3 \square 2^4 \square 2^5 \square 2^6 \square 2^7 = 47$$

where \square is either + or -. What is the right combination of these two mathematical operators to get the above result?

[Question ID = 11441]

1. + + - - + + +

[Option ID = 45758]

2. + - - - + + +

[Option ID = 45759]

3. + - - + + + +

[Option ID = 45760]

4. + + - - - - +

[Option ID = 45761]

Correct Answer :-

• + + - - - - +

[Option ID = 45761]

7) Following is the addition of a One, Two, Three, and Four digit number.

$$\square + \square\square + \square\square\square + \square\square\square\square$$

where the boxes can be filled with digits 0 through 9 without repetition. What is the largest possible sum possible?

[Question ID = 11442]

1. 8456 [Option ID = 45762]

2. 9556 [Option ID = 45763]

3. 10656 [Option ID = 45764]

4. 11756 [Option ID = 45765]

Correct Answer :-

• 10656 [Option ID = 45764]

8) There are three people A, B, and C, and by profession they are Painter, Actor, and Designer, but not in the same order. They have kids X, Y, and Z, and also not in the same order. It is known that • A is the father of X, but not a Painter • B is either a Painter or a Designer • C is an Actor, and is father of Y • Z is the son of a Painter What is the profession of X's father?

[Question ID = 11443]

1. Painter

[Option ID = 45766]

2. Actor

[Option ID = 45767]

3. Designer

[Option ID = 45768]

4. Not enough information to decide

[Option ID = 45769]

Correct Answer :-

• Designer

[Option ID = 45768]

9) What number should come next in the series?

$$\frac{1}{2}, \frac{1}{3}, \frac{1}{8}, \frac{1}{30}, ?$$

[Question ID = 11444]

1. 1/64 [Option ID = 45770]

2. 1/48 [Option ID = 45771]

3. 1/144 [Option ID = 45772]

4. 1/72 [Option ID = 45773]

Correct Answer :-

• 1/144 [Option ID = 45772]

10) Which one does not belong with others?

I. Swine Flu

II. Middle East Respiratory Syndrome

III. Severe Acute Respiratory Syndrome

IV. Minamata Syndrome

[Question ID = 11445]

1. I [Option ID = 45774]

2. II [Option ID = 45775]

3. III [Option ID = 45776]
4. IV [Option ID = 45777]

Correct Answer :-

- IV [Option ID = 45777]

11) Brain : Synapses :: Lungs : ?

[Question ID = 11446]

1. Thorax [Option ID = 45778]
2. Trachea [Option ID = 45779]
3. Bronchioles [Option ID = 45780]
4. Pleura [Option ID = 45781]

Correct Answer :-

- Bronchioles [Option ID = 45780]

12) A pandemic is an epidemic that is spreading over multiple countries and continents. Which situation below is an example of a pandemic?

- I. A disease that affects a large number of people within a community, population, or region.
- II. A disease that is actively spreading and new cases substantially exceed from what was expected.
- III. A disease caused by a virus that mutates every fortnight and scientists are able to study how it is moving from one country to another from this mutation.
- IV. A rare disease that is present all over the world for many decades.

[Question ID = 11447]

1. I [Option ID = 45782]
2. II [Option ID = 45783]
3. III [Option ID = 45784]
4. IV [Option ID = 45785]

Correct Answer :-

- III [Option ID = 45784]

13) Statements: All women athletes can dance. Some women dancers can play volleyball.

Conclusions I: Women athletes can play volleyball.

Conclusions II: Women volleyball players can dance.

[Question ID = 11448]

1. Only conclusion I follows [Option ID = 45786]
2. Only conclusion II follows [Option ID = 45787]
3. Either I or II follows [Option ID = 45788]
4. Neither I nor II follows [Option ID = 45789]

Correct Answer :-

- Neither I nor II follows [Option ID = 45789]

14) Find the next number in the sequence:-

6, 24, 60, 120, 210,.....

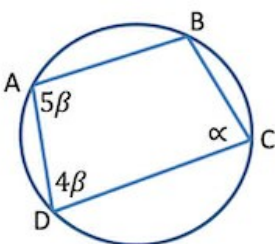
[Question ID = 11449]

1. 300 [Option ID = 45790]
2. 336 [Option ID = 45791]
3. 360 [Option ID = 45792]
4. 386 [Option ID = 45793]

Correct Answer :-

- 336 [Option ID = 45791]

15) AB and CD are parallel lines. Find the angle α



[Question ID = 11450]

1. 50° [Option ID = 45794]
2. 60° [Option ID = 45795]

3. 70° [Option ID = 45796]
4. 80° [Option ID = 45797]

Correct Answer :-

- 80° [Option ID = 45797]

16) What is the missing symbol in the figure below?



- (1)  (2)  (3)  (4) 

[Question ID = 11451]

1. 1 [Option ID = 45798]
2. 2 [Option ID = 45799]
3. 3 [Option ID = 45800]
4. 4 [Option ID = 45801]

Correct Answer :-

- 1 [Option ID = 45798]

17) For the series: 2, 4, 6, 10, __, 10, 12, 10, 14, 16 ..., what number should be filled in the blank?

[Question ID = 11452]

1. 6 [Option ID = 45802]
2. 8 [Option ID = 45803]
3. 12 [Option ID = 45804]
4. 14 [Option ID = 45805]

Correct Answer :-

- 8 [Option ID = 45803]

18) One day, Aman observed the time in the mirror image of the clock as 4 hours and 40 minutes. What is the actual time shown by the clock?

[Question ID = 11453]

1. 8 hours 20 minutes [Option ID = 45806]
2. 7 hours 40 minutes [Option ID = 45807]
3. 7 hours 20 minutes [Option ID = 45808]
4. 8 hours 40 minutes [Option ID = 45809]

Correct Answer :-

- 7 hours 20 minutes [Option ID = 45808]

19) If + means divide, x means minus, % means multiply and - means plus, then find the value of $8 + 2 \% 3 - 7 \times 4 = ?$

[Question ID = 11454]

1. 15 [Option ID = 45810]
2. 16 [Option ID = 45811]
3. 17 [Option ID = 45812]
4. 18 [Option ID = 45813]

Correct Answer :-

- 15 [Option ID = 45810]

20) ZA5, Y4B, XC6, W3D, _?_

[Question ID = 11455]

1. E7V [Option ID = 45814]
2. V2E [Option ID = 45815]
3. VE5 [Option ID = 45816]
4. VE7 [Option ID = 45817]

Correct Answer :-

- VE7 [Option ID = 45817]

21) Pipes A, B and C together fill a tank in 5hrs. Pipe C is twice as fast as pipe B and pipe B is twice as fast as pipe A. How much time will pipe A alone take to fill the tank?

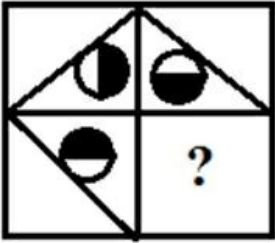
[Question ID = 11456]

1. 20 hours [Option ID = 45818]
2. 25 hours [Option ID = 45819]
3. 35 hours [Option ID = 45820]
4. 30 hours [Option ID = 45821]

Correct Answer :-

- 35 hours [Option ID = 45820]

22) Identify the figure that completes the pattern.



[Question ID = 11457]



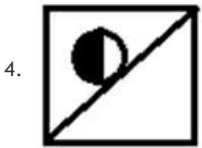
[Option ID = 45822]



[Option ID = 45823]

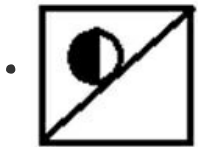


[Option ID = 45824]



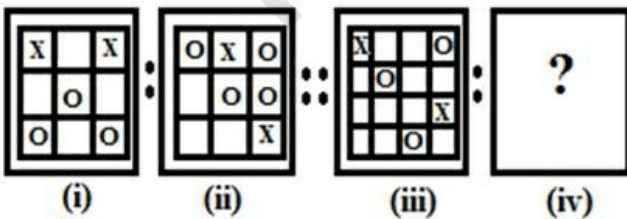
[Option ID = 45825]

Correct Answer :-

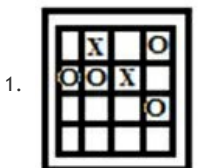


[Option ID = 45825]

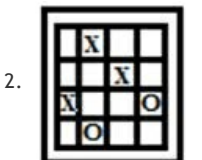
23) There is some relationship between diagrams (i) and (ii). The same relationship persists between (iii) and (iv). Find the correct diagram for (iv) from the given options.



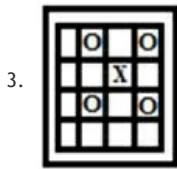
[Question ID = 11458]



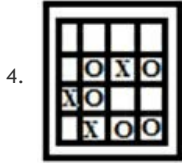
[Option ID = 45826]



[Option ID = 45827]

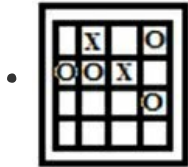


[Option ID = 45828]



[Option ID = 45829]

Correct Answer :-



[Option ID = 45826]

24) Aman and Asha got married on Sunday, 5th December 1993. In which year will they next celebrate their anniversary on a Sunday?

[Question ID = 11459]

1. 1997 [Option ID = 45830]
2. 1998 [Option ID = 45831]
3. 1999 [Option ID = 45832]
4. 2000 [Option ID = 45833]

Correct Answer :-

- 1999 [Option ID = 45832]

25) Here are some words translated from an artificial language. agnosvergos means Coppersmith Barbet delnosdeeryvergos means Brown Headed Barbet flenusdeeryagnos means Bald Headed Vulture Which word could mean "Brown Headed Vulture"?

[Question ID = 11460]

1. agnosvergosdeery [Option ID = 45834]
2. delnosvergosdeery [Option ID = 45835]
3. delnosdeeryagnos [Option ID = 45836]
4. delnosdeeryvergos [Option ID = 45837]

Correct Answer :-

- delnosdeeryagnos [Option ID = 45836]

26) Choose the one that does not belong to the group.

[Question ID = 11461]

1. 6:18 [Option ID = 45838]
2. 4:13 [Option ID = 45839]
3. 5:16 [Option ID = 45840]
4. 7:22 [Option ID = 45841]

Correct Answer :-

- 6:18 [Option ID = 45838]

27) Complete the sequence ACF, GIL, MOR, ?

[Question ID = 11462]

1. STW [Option ID = 45842]
2. SUX [Option ID = 45843]
3. TVX [Option ID = 45844]
4. TVY [Option ID = 45845]

Correct Answer :-

- SUX [Option ID = 45843]

28) If

$$f(x) = \begin{bmatrix} \cos x & -\sin x & 0 \\ \sin x & \cos x & 0 \end{bmatrix}$$

$$\begin{bmatrix} 0 & 0 & 1 \end{bmatrix}$$

then which of the following are correct?

- I. $f(\theta) \times f(\phi) = f(\theta + \phi)$.
- II. The value of the determinant of the matrix $f(\theta) \times f(\phi)$ is 1.
- III. The determinant of $f(x)$ is an even function.

[Question ID = 11463]

1. Only I
[Option ID = 45846]
2. Only II
[Option ID = 45847]
3. Only III
[Option ID = 45848]
4. I, II and III
[Option ID = 45849]

Correct Answer :-

- I, II and III
[Option ID = 45849]

29) Let X be the set of all persons living in Delhi. The persons A and B in X are said to be related if the difference in their ages is at most 5 years. This relation is:-

[Question ID = 11464]

1. an equivalence relation
[Option ID = 45850]
2. a reflexive and transitive but not symmetric relation
[Option ID = 45851]
3. a symmetric and transitive but not reflexive relation
[Option ID = 45852]
4. a reflexive and symmetric but not transitive relation
[Option ID = 45853]

Correct Answer :-

- a reflexive and symmetric but not transitive relation
[Option ID = 45853]

30) Consider the following system of linear equations:

$$2x + 3y + 5z = 9$$

$$7x + 3y - 2z = 8$$

$$2x + 3y + \lambda z = \mu.$$

Under what conditions does the above system of equations have a unique solution?

[Question ID = 11465]

1. $\lambda = 5$ and $\mu = 9$
[Option ID = 45854]
2. $\lambda \neq 5$ and μ has any real value
[Option ID = 45855]
3. $\lambda \neq 5$ and $\mu = 7$ only
[Option ID = 45856]
4. λ has any real value and $\mu \neq 9$
[Option ID = 45857]

Correct Answer :-

- $\lambda \neq 5$ and μ has any real value
[Option ID = 45855]

31) The value of the infinite product $6^{\frac{1}{2}} \times 6^{\frac{1}{2}} \times 6^{\frac{3}{8}} \times 6^{\frac{1}{4}} \times \dots$ is:-

[Question ID = 11466]

1. 6
[Option ID = 45858]
2. 36
[Option ID = 45859]
3. 216
[Option ID = 45860]
4. ∞
[Option ID = 45861]

Correct Answer :-

- 36
[Option ID = 45859]

32) The number of real solutions of $1 + |e^x - 1| = e^x(e^x - 2)$ is:-

[Question ID = 11467]

1. 0
[Option ID = 45862]
2. 1
[Option ID = 45863]
3. 2
[Option ID = 45864]
4. 4
[Option ID = 45865]

Correct Answer :-

- 1
[Option ID = 45863]

33) If the roots of the equation $x^2 + 2ax + b = 0$ are real and distinct and they differ by at most $2m$, then b lies in the interval:-

[Question ID = 11468]

1. $(a^2 - m^2, a^2)$
[Option ID = 45866]
2. $[a^2 - m^2, a^2)$
[Option ID = 45867]
3. $[a^2, a^2 + m^2]$
[Option ID = 45868]
4. $(a^2, a^2 + m^2)$
[Option ID = 45869]

Correct Answer :-

- $[a^2 - m^2, a^2)$
[Option ID = 45867]

34) If the sum of the coefficients in the expansion of $(\alpha^2 x^2 - 2\alpha x + 1)^{51}$ vanishes, then the value of α is:-

[Question ID = 11469]

1. 2
[Option ID = 45870]
2. -1
[Option ID = 45871]
3. 1
[Option ID = 45872]
4. -2
[Option ID = 45873]

Correct Answer :-

- 1
[Option ID = 45872]

35) If $[x]$ denotes the greatest integer less than or equal to x , then the solution set of the inequality $\frac{[x]-4}{6-[x]} > 0$ is:-

[Question ID = 11470]

1. [4, 6)
[Option ID = 45874]
2. [5, 6)
[Option ID = 45875]
3. [5, 6]
[Option ID = 45876]
4. (5, 6)
[Option ID = 45877]

Correct Answer :-

- [5, 6)
[Option ID = 45875]

36) If $\frac{\log x}{3a+5b-8c} = \frac{\log y}{3b+5c-8a} = \frac{\log z}{3c+5a-8b}$ then xyz equals:-

[Question ID = 11471]

1. 1
[Option ID = 45878]
2. 0
[Option ID = 45879]
3. -1
[Option ID = 45880]
4. 2
[Option ID = 45881]

Correct Answer :-

- 1
[Option ID = 45878]

37) The product of roots of the equation $\sqrt{9+x} + \sqrt{9-x} = 2$ is:-

[Question ID = 11472]

1. 81
[Option ID = 45882]
2. 83
[Option ID = 45883]
3. -79
[Option ID = 45884]
4. -32
[Option ID = 45885]

Correct Answer :-

- -32
[Option ID = 45885]

38) Persons A and B residing 5 kilometres apart decide to meet on the way by walking towards each other's residence. A walks at the speed of 5 km/hr while B does so at 4 km/hr. A starts walking 10 minutes after B has started. For how long will B walk before meeting A?

Choose the option closest to the answer.

[Question ID = 11473]

1. 29 minutes

[Option ID = 45886]

2. 39 minutes

[Option ID = 45887]

3. 33 minutes

[Option ID = 45888]

4. 43 minutes

[Option ID = 45889]

Correct Answer :-

• 39 minutes

[Option ID = 45887]

39) Which cannot be the number of elements in the power set of any finite set?

[Question ID = 11474]

1. 64 [Option ID = 45890]

2. 16 [Option ID = 45891]

3. 128 [Option ID = 45892]

4. 24 [Option ID = 45893]

Correct Answer :-

• 24 [Option ID = 45893]

40) A depositor receives the same amount of interest from her two deposits with a bank earning interest at 8% and 20% per annum. What is the rate of interest received by the depositor on the entire deposit with the bank?

[Question ID = 11475]

1. 13.8%

[Option ID = 45894]

2. 11.4%

[Option ID = 45895]

3. 14%

[Option ID = 45896]

4. Information is insufficient

[Option ID = 45897]

Correct Answer :-

• 11.4%

[Option ID = 45895]

41) The number of ways in which 8 distinct hats can be distributed among 5 children is:-

[Question ID = 11476]

1. 8^5 [Option ID = 45898]

2. 5^8 [Option ID = 45899]

3. 8P_5 [Option ID = 45900]

4. 40 [Option ID = 45901]

Correct Answer :-

• 5^8 [Option ID = 45899]

42) The number of ways in which an examiner can assign 60 marks to 10 questions, giving not less than 2 marks to any question is:-

[Question ID = 11477]

1. ${}^{40}C_{10}$ [Option ID = 45902]

2. ${}^{60}C_{10}$ [Option ID = 45903]

3. ${}^{49}C_9$ [Option ID = 45904]

4. ${}^{49}C_{10}$ [Option ID = 45905]

Correct Answer :-

• ${}^{49}C_9$ [Option ID = 45904]

43) If $f(x) = |x^2 - 5x + 6|$, then $f'(x)$ is equal to:-

[Question ID = 11478]

1. $5 - 2x$ if $2 < x < 3$

[Option ID = 45906]

2. $2x - 5$ if $2 < x < 3$

[Option ID = 45907]

3. $2x - 5$ if $2 \leq x < 3$

[Option ID = 45908]

4. $2x - 5$ if $2 < x \leq 3$

[Option ID = 45909]

Correct Answer :-

• $5 - 2x$ if $2 < x < 3$

[Option ID = 45906]

44) The probability of the availability of dragon fruit in the market on any given day is 0.5. What is the minimum number of days that a person should visit the market so that the probability of finding the fruit on at least one day is more than 0.9?

[Question ID = 11479]

1. 2 [Option ID = 45910]

2. 3 [Option ID = 45911]

3. 4 [Option ID = 45912]

4. 5 [Option ID = 45913]

Correct Answer :-

• 4 [Option ID = 45912]

45) Let α and β be the roots of the equation $x^2 + x + 1 = 0$. The equation whose roots are α^{19}, β^7 is

[Question ID = 11480]

1. $x^2 - x - 1 = 0$

[Option ID = 45914]

2. $x^2 - x + 1 = 0$

[Option ID = 45915]

3. $x^2 + x - 1 = 0$

[Option ID = 45916]

4. $x^2 + x + 1 = 0$

[Option ID = 45917]

Correct Answer :-

• $x^2 + x + 1 = 0$

[Option ID = 45917]

46) If prices rise by 20% from the year 2010 to 2011, the value of one rupee of 2011 equals Rs. $1/1.2$ or Rs. 0.83 of the value of the rupee on 2010. Use this information to answer the following:

A person has an income of Rs. 400,000 in 2015 and prices rise at the rate of 10% each year for the next three years. How much additional income should be paid to the person in 2018 so that the value of her income in terms of the rupees of 2015 is the same as her income in 2015?

[Question ID = 11481]

1. Rs. 132,400

[Option ID = 45918]

2. Rs. 520,000

[Option ID = 45919]

3. Rs. 532,400

[Option ID = 45920]

4. Rs. 120,000

[Option ID = 45921]

Correct Answer :-

• Rs. 132,400

[Option ID = 45918]

47) $2^X + 2^Y = 2^{X+Y}$, then the value of $\frac{dY}{dX}$ at $X = Y = 1$ is

[Question ID = 11482]

1. 0
[Option ID = 45922]
2. -1
[Option ID = 45923]
3. 1
[Option ID = 45924]
4. 2
[Option ID = 45925]

Correct Answer :-

- -1
[Option ID = 45923]

48) The area enclosed between the curves $y^2 = 4x$ and $x^2 = 4y$ is:-

[Question ID = 11483]

1. $\frac{16}{3}$
[Option ID = 45926]
2. 8
[Option ID = 45927]
3. $\frac{32}{3}$
[Option ID = 45928]
4. 16
[Option ID = 45929]

Correct Answer :-

- $\frac{16}{3}$
[Option ID = 45926]

49) A laboratory blood test is 95% effective in detecting a certain disease when it is, in fact, present. However, the test also yields a "false positive" result for 1% of the healthy person tested. (That is, if a healthy person is tested, then, with probability 0.01, the test result will imply he has the disease). It is given that 0.5% of the population actually has the disease. The probability that a person has the disease given that his test result is positive is:-

[Question ID = 11484]

1. 1 [Option ID = 45930]
2. 0.5 [Option ID = 45931]
3. 0.333 [Option ID = 45932]
4. 0.25 [Option ID = 45933]

Correct Answer :-

- 0.333 [Option ID = 45932]

50) A boat covers a certain distance downstream in 1 hour, while it comes back in 1.5 hrs. If the speed of the stream be 3 kmph, what is the speed of the boat in still water?

[Question ID = 11485]

1. 15 kmph [Option ID = 45934]
2. 13 kmph [Option ID = 45935]
3. 14 kmph [Option ID = 45936]
4. 12 kmph [Option ID = 45937]

Correct Answer :-

- 15 kmph [Option ID = 45934]

51) Statements given in column P are either necessary or sufficient for statements given beside these in column Q.

Column P	Column Q
I. $A \cup B = \emptyset$	$B = \emptyset$
II. $f'(a)=0$	Differentiable function $f(x)$ has a maxima at $x=a$
III. $4x + 3 \geq 11$	$x \geq 1$

IV. $x < 4$

$x^2 < 16$

Choose the correct answer for the four statements given in the provided options.

[Question ID = 11486]

1. I. Sufficient; II. Necessary; III. Sufficient; IV. Necessary

[Option ID = 45938]

2. I. Sufficient; II. Sufficient; III. Necessary; IV. Necessary

[Option ID = 45939]

3. I. Necessary; II. Necessary; III. Sufficient; IV. Sufficient

[Option ID = 45940]

4. I. Necessary; II. Sufficient; III. Sufficient; IV. Necessary

[Option ID = 45941]

Correct Answer :-

• I. Sufficient; II. Necessary; III. Sufficient; IV. Necessary

[Option ID = 45938]

52) John invested an amount of Rs 12,000 at the rate of 10% per annum at simple interest and another amount at the rate of 20% per annum at simple interest. The total interest earned at the end of one year on the total amount invested became 14% per annum. Find the total amount invested.

[Question ID = 11487]

1. Rs 20,000 [Option ID = 45942]

2. Rs 22,000 [Option ID = 45943]

3. Rs 24,000 [Option ID = 45944]

4. Rs 25,000 [Option ID = 45945]

Correct Answer :-

• Rs 20,000 [Option ID = 45942]

53) The period of the function $f(x) = \sin \frac{2x+3}{6\pi}$ is:-

[Question ID = 11488]

1. 2π

[Option ID = 45946]

2. 6π

[Option ID = 45947]

3. $6\pi^2$

[Option ID = 45948]

4. None of these

[Option ID = 45949]

Correct Answer :-

• $6\pi^2$

[Option ID = 45948]

54) $\lim_{x \rightarrow \infty} \frac{x^n}{e^x} = 0$, (n integer), for

[Question ID = 11489]

1. no value of n

[Option ID = 45950]

2. all values of n

[Option ID = 45951]

3. Only negative values of n

[Option ID = 45952]

4. only positive values of n

[Option ID = 45953]

Correct Answer :-

• all values of n

[Option ID = 45951]

55) In an examination, 65% students passed in Mathematics, 72% students passed in Economics and 45% passed in both. The percentage of students who failed in both the subjects is:-

[Question ID = 11490]

1. 12%

[Option ID = 45954]

2. 28%

[Option ID = 45955]

3. 8%

[Option ID = 45956]

4. 16%

[Option ID = 45957]

Correct Answer :-

• 8%

[Option ID = 45956]

56) Tea worth Rs. 126 per kg and Rs. 135 per kg is mixed with a third variety in the ratio 1:1:2. If the mixture is worth Rs. 153 per kg, the price of the third variety per kg should be:-

[Question ID = 11491]

1. Rs 169.50

[Option ID = 45958]

2. Rs 170

[Option ID = 45959]

3. Rs 175.50

[Option ID = 45960]

4. Rs 180

[Option ID = 45961]

Correct Answer :-

• Rs 175.50

[Option ID = 45960]

57) If \bar{A} and \bar{B} are the complementary events of A and B such that $P(\bar{A})=0.4$, $P(\bar{B})=0.3$ and $P(A \cup B)=0.9$, then what is the value of $P(\bar{A} \cup \bar{B})$?

[Question ID = 11492]

1. 0.2

[Option ID = 45962]

2. 0.5

[Option ID = 45963]

3. 0.6

[Option ID = 45964]

4. 0.7

[Option ID = 45965]

Correct Answer :-

• 0.6

[Option ID = 45964]

58) Who among the following is the current Chief Economist of International Monetary Fund (IMF)?

[Question ID = 11493]

1. Kenneth Rogoff [Option ID = 45966]

2. Gita Gopinath [Option ID = 45967]

3. Maury Obstfeld [Option ID = 45968]

4. Kristalina Georgieva [Option ID = 45969]

Correct Answer :-

• Gita Gopinath [Option ID = 45967]

59) What is India's rank in "Ease of Doing Business Rankings" recently released by World Bank in its report Doing Business 2020?

[Question ID = 11494]

1. 78 [Option ID = 45970]

2. 52 [Option ID = 45971]
3. 63 [Option ID = 45972]
4. 115 [Option ID = 45973]

Correct Answer :-

- 63 [Option ID = 45972]

60) Who among the following won the Nobel Peace Prize in the year 2019?

[Question ID = 11495]

1. Peter Handke [Option ID = 45974]
2. Abiy Ahmed [Option ID = 45975]
3. Michel Mayor [Option ID = 45976]
4. Michael Kremer [Option ID = 45977]

Correct Answer :-

- Abiy Ahmed [Option ID = 45975]

61) The Parker Probe mission launched by NASA was related to the study of:-

[Question ID = 11496]

1. Moon [Option ID = 45978]
2. Sun [Option ID = 45979]
3. Jupiter [Option ID = 45980]
4. Mars [Option ID = 45981]

Correct Answer :-

- Sun [Option ID = 45979]

62) Which company among the following was acquired by Walt Disney Co. in 2019?

[Question ID = 11497]

1. Viacom [Option ID = 45982]
2. Warner Bros [Option ID = 45983]
3. CBS Corporation [Option ID = 45984]
4. 21st Century Fox [Option ID = 45985]

Correct Answer :-

- 21st Century Fox [Option ID = 45985]

63) Who among the following is the current National Security Advisor of India?

[Question ID = 11498]

1. Gulshan Kumar [Option ID = 45986]
2. Ajit Doval [Option ID = 45987]
3. Ravi Shankar Parsad [Option ID = 45988]
4. Kanti Ghosh [Option ID = 45989]

Correct Answer :-

- Ajit Doval [Option ID = 45987]

64) Which female Indian cricketer won the BCCI C.K. Nayudu Lifetime Achievement award for 2019?

[Question ID = 11499]

1. Shafali Verma [Option ID = 45990]
2. Harmanpreet Kaur [Option ID = 45991]
3. Anjum Chopra [Option ID = 45992]
4. Mithali Raj [Option ID = 45993]

Correct Answer :-

- Anjum Chopra [Option ID = 45992]

65) Central Vista Project is related to which of the following?

[Question ID = 11500]

1. Central government project to create a corridor between Delhi and Mumbai [Option ID = 45994]
2. Expansion and Renovation of existing Indian Parliament Buildings [Option ID = 45995]
3. A plan to construct a new office complex in Delhi [Option ID = 45996]
4. A freight corridor connecting Delhi and Ahmedabad [Option ID = 45997]

Correct Answer :-

- Expansion and Renovation of existing Indian Parliament Buildings [Option ID = 45995]

66) CMIE is a nomenclature for:-

[Question ID = 11501]

1. Centre for Monitoring Invasion and Espionage Public Limited [Option ID = 45998]
2. Centre for Monitoring Indian Economy Private Limited [Option ID = 45999]
3. Centre for Managing Import and Export Private Limited [Option ID = 46000]
4. Centre for Monitoring Investment and E-commerce Private Limited [Option ID = 46001]

Correct Answer :-

67) With which of the following company has Ministry of Electronics and Information Technology (MeitY) signed a statement of intent to roll-out 'Build for Digital India'?

[Question ID = 11502]

1. Microsoft [Option ID = 46002]
2. Facebook [Option ID = 46003]
3. Google [Option ID = 46004]
4. Apple [Option ID = 46005]

Correct Answer :-

- Google [Option ID = 46004]

Topic:- JAT01 S2_P5

1) Consider the function:

$$f(x) = \begin{cases} -2 \sin x & \text{if } x \leq -\frac{\pi}{2} \\ B + A \sin x & \text{if } -\frac{\pi}{2} < x < \frac{\pi}{2} \\ \cos x & \text{if } x \geq \frac{\pi}{2} \end{cases}$$

which is continuous everywhere. What is the value of A?

[Question ID = 11504]

1. 1 [Option ID = 46010]
2. 0 [Option ID = 46011]
3. -1 [Option ID = 46012]
4. -2 [Option ID = 46013]

Correct Answer :-

- -1 [Option ID = 46012]

2) Consider the function:

$$f(x) = \begin{cases} -2 \sin x & \text{if } x \leq -\frac{\pi}{2} \\ B + A \sin x & \text{if } -\frac{\pi}{2} < x < \frac{\pi}{2} \\ \cos x & \text{if } x \geq \frac{\pi}{2} \end{cases}$$

which is continuous everywhere. What is the value of B?

[Question ID = 11505]

1. 1
[Option ID = 46014]
2. 0
[Option ID = 46015]
3. -1
[Option ID = 46016]
4. -2
[Option ID = 46017]

Correct Answer :-

- 1
[Option ID = 46014]

Topic:- JAT01 S2_P6

1) Choose from the options the most appropriate antonym of the given word.

NADIR

[Question ID = 11507]

1. clone [Option ID = 46022]

2. peak [Option ID = 46023]
3. reject [Option ID = 46024]
4. timely [Option ID = 46025]

Correct Answer :-

- peak [Option ID = 46023]

2) Choose from the options the most appropriate antonym of the given word.

PANDEMONIUM

[Question ID = 11508]

1. funny [Option ID = 46026]
2. immediate [Option ID = 46027]
3. peace [Option ID = 46028]
4. phonetic [Option ID = 46029]

Correct Answer :-

- peace [Option ID = 46028]

3) Choose from the options the most appropriate antonym of the given word.

ACRIMONIOUS

[Question ID = 11509]

1. courtesy [Option ID = 46030]
2. latter [Option ID = 46031]
3. agrarian [Option ID = 46032]
4. economy [Option ID = 46033]

Correct Answer :-

- courtesy [Option ID = 46030]

Topic:- JAT01 S2_P7

1) Read the statement and answer the question that follows.

A conservation group in the United States is trying to change the long-standing image of bats as frightening creatures. The group contends that bats are feared and persecuted solely because they are shy animals that are active only at night. Which of the following, if true, would cast the most serious doubt on the accuracy of the group's contention?

[Question ID = 11511]

1. Bats are steadily losing natural roosting places such as caves and hollow trees and are thus turning to more developed areas for roosting. [Option ID = 46038]
2. Bats are the chief consumers of nocturnal insects and thus can help make their hunting territory more pleasant for humans. [Option ID = 46039]
3. Bats are regarded as frightening creatures not only in the United States but also in Europe, Africa, and South America. [Option ID = 46040]
4. Raccoons and owls are shy and active only at night; yet they are not generally feared and persecuted. [Option ID = 46041]

Correct Answer :-

- Raccoons and owls are shy and active only at night; yet they are not generally feared and persecuted. [Option ID = 46041]

2) Read the statement and answer the question that follows.

Between 1975 and 1985, nursing-home occupancy rates averaged 87 percent of capacity, while admission rates remained constant, at an average of 95 admissions per 1,000 beds per year. Between 1985 and 1988, however, occupancy rates rose to an average of 92 percent of capacity, while admission rates declined to 81 per 1,000 beds per year. If the statements above are true, which of the following conclusions can be most properly drawn?

[Question ID = 11512]

1. The average length of time nursing-home residents stayed in nursing homes increased between 1985 and 1988. [Option ID = 46042]
2. The proportion of older people living in nursing homes was greater in 1988 than in 1975. [Option ID = 46043]
3. Nursing home admission rates tend to decline whenever occupancy rates rise. [Option ID = 46044]
4. The more beds a nursing home has, the higher its occupancy rate is likely to be. [Option ID = 46045]

Correct Answer :-

- The average length of time nursing-home residents stayed in nursing homes increased between 1985 and 1988. [Option ID = 46042]

Topic:- JAT01 S2_P8

1) Read the following excerpt and answer the questions that follow:-

The new school of political history that emerged in the 1960's and 1970's sought to go beyond the traditional focus of political historians on leaders and government institutions by examining directly the political practices of ordinary citizens. Like the old approach, however, this new approach excluded women. The very techniques these historians used to uncover mass political behavior in the nineteenth-century United States - quantitative analyses of election returns, for example - were useless in analyzing the political activities of women, who were denied the vote until 1920. By redefining "political

activity,” historian Paula Baker has developed a political history that includes women. She concludes that among ordinary citizens, political activism by women in the nineteenth century prefigured trends in twentieth-century politics. Defining “politics” as “any action taken to affect the course of behavior of government or of the community,” Baker concludes that, while voting and holding office were restricted to men, women in the nineteenth century organized themselves into societies committed to social issues such as temperance and poverty. In other words, Baker contends, women activists were early practitioners of nonpartisan, issue-oriented politics and thus were more interested in enlisting lawmakers, regardless of their party affiliation, on behalf of certain issues than in ensuring that one party or another won an election. In the twentieth century, more men drew closer to women’s ideas about politics and took up modes of issue-oriented politics that Baker sees women as having pioneered. The primary purpose of the passage is to:-

[Question ID = 11514]

1. Enumerate reason why both traditional scholarly methods and newer scholarly methods have limitations.

[Option ID = 46050]

2. Identify a shortcoming in a scholarly approach and describe an alternative approach.

[Option ID = 46051]

3. Provide empirical data to support a long-held scholarly assumption.

[Option ID = 46052]

4. Compare two scholarly publications on the basis of their authors’ backgrounds.

[Option ID = 46053]

Correct Answer :-

- Identify a shortcoming in a scholarly approach and describe an alternative approach.

[Option ID = 46051]

2) Read the following excerpt and answer the questions that follow:-

The new school of political history that emerged in the 1960’s and 1970’s sought to go beyond the traditional focus of political historians on leaders and government institutions by examining directly the political practices of ordinary citizens. Like the old approach, however, this new approach excluded women. The very techniques these historians used to uncover mass political behavior in the nineteenth-century United States - quantitative analyses of election returns, for example - were useless in analyzing the political activities of women, who were denied the vote until 1920. By redefining “political activity,” historian Paula Baker has developed a political history that includes women. She concludes that among ordinary citizens, political activism by women in the nineteenth century prefigured trends in twentieth-century politics. Defining “politics” as “any action taken to affect the course of behavior of government or of the community,” Baker concludes that, while voting and holding office were restricted to men, women in the nineteenth century organized themselves into societies committed to social issues such as temperance and poverty. In other words, Baker contends, women activists were early practitioners of nonpartisan, issue-oriented politics and thus were more interested in enlisting lawmakers, regardless of their party affiliation, on behalf of certain issues than in ensuring that one party or another won an election. In the twentieth century, more men drew closer to women’s ideas about politics and took up modes of issue-oriented politics that Baker sees women as having pioneered.

The passage suggests which of the following concerning the techniques used by the new political historians described in the first paragraph of the passage?

[Question ID = 11515]

1. They involved the extensive use of the biographies of political party leaders and political theoreticians.

[Option ID = 46054]

2. They were conceived by political historians who were reacting against the political climates of the 1960s and 1970s.

[Option ID = 46055]

3. They were of more use in analyzing the positions of United States political parties in the nineteenth century than in analyzing the positions of those in the twentieth century.

[Option ID = 46056]

4. They were of more use in analyzing the political behavior of nineteenth-century voters than in analyzing the political activities of those who could not vote during that period.

[Option ID = 46057]

Correct Answer :-

- They were of more use in analyzing the political behavior of nineteenth-century voters than in analyzing the political activities of those who could not vote during that period.

[Option ID = 46057]

3) Read the following excerpt and answer the questions that follow:-

The new school of political history that emerged in the 1960’s and 1970’s sought to go beyond the traditional focus of political historians on leaders and government institutions by examining directly the political practices of ordinary citizens. Like the old approach, however, this new approach excluded women. The very techniques these historians used to uncover mass political behavior in the nineteenth-century United States - quantitative analyses of election returns, for example -

were useless in analyzing the political activities of women, who were denied the vote until 1920. By redefining “political activity,” historian Paula Baker has developed a political history that includes women. She concludes that among ordinary citizens, political activism by women in the nineteenth century prefigured trends in twentieth-century politics. Defining “politics” as “any action taken to affect the course of behavior of government or of the community,” Baker concludes that, while voting and holding office were restricted to men, women in the nineteenth century organized themselves into societies committed to social issues such as temperance and poverty. In other words, Baker contends, women activists were early practitioners of nonpartisan, issue-oriented politics and thus were more interested in enlisting lawmakers, regardless of their party affiliation, on behalf of certain issues than in ensuring that one party or another won an election. In the twentieth century, more men drew closer to women’s ideas about politics and took up modes of issue-oriented politics that Baker sees women as having pioneered. It can be inferred that the author of the passage quotes Baker directly in the second paragraph primarily in order to:-

[Question ID = 11516]

1. Clarify a position before providing an alternative to that position.

[Option ID = 46058]

2. Differentiate between a novel definition and traditional definitions.

[Option ID = 46059]

3. Provide an example of a point agreed on by different generations of scholars.

[Option ID = 46060]

4. Provide an example of the prose style of an important historian.

[Option ID = 46061]

Correct Answer :-

- Differentiate between a novel definition and traditional definitions.

[Option ID = 46059]

4) Read the following excerpt and answer the questions that follow:-

The new school of political history that emerged in the 1960’s and 1970’s sought to go beyond the traditional focus of political historians on leaders and government institutions by examining directly the political practices of ordinary citizens. Like the old approach, however, this new approach excluded women. The very techniques these historians used to uncover mass political behavior in the nineteenth-century United States - quantitative analyses of election returns, for example - were useless in analyzing the political activities of women, who were denied the vote until 1920. By redefining “political activity,” historian Paula Baker has developed a political history that includes women. She concludes that among ordinary citizens, political activism by women in the nineteenth century prefigured trends in twentieth-century politics. Defining “politics” as “any action taken to affect the course of behavior of government or of the community,” Baker concludes that, while voting and holding office were restricted to men, women in the nineteenth century organized themselves into societies committed to social issues such as temperance and poverty. In other words, Baker contends, women activists were early practitioners of nonpartisan, issue-oriented politics and thus were more interested in enlisting lawmakers, regardless of their party affiliation, on behalf of certain issues than in ensuring that one party or another won an election. In the twentieth century, more men drew closer to women’s ideas about politics and took up modes of issue-oriented politics that Baker sees women as having pioneered.

According to the passage, Paula Baker and the new political historians of the 1960’s and 1970’s shared which of the following?

[Question ID = 11517]

1. A disregard for political theory and ideology.

[Option ID = 46062]

2. An interest in the ways in which nineteenth-century politics prefigured contemporary politics.

[Option ID = 46063]

3. A reliance on such qualitative techniques as the analysis of election returns.

[Option ID = 46064]

4. An emphasis on the political involvement of ordinary citizens.

[Option ID = 46065]

Correct Answer :-

- An emphasis on the political involvement of ordinary citizens.

[Option ID = 46065]

5) Read the following excerpt and answer the questions that follow:-

The new school of political history that emerged in the 1960’s and 1970’s sought to go beyond the traditional focus of political historians on leaders and government institutions by examining directly the political practices of ordinary citizens. Like the old approach, however, this new approach excluded women. The very techniques these historians used to uncover mass political behavior in the nineteenth-century United States - quantitative analyses of election returns, for example -

were useless in analyzing the political activities of women, who were denied the vote until 1920. By redefining “political activity,” historian Paula Baker has developed a political history that includes women. She concludes that among ordinary citizens, political activism by women in the nineteenth century prefigured trends in twentieth-century politics. Defining “politics” as “any action taken to affect the course of behavior of government or of the community,” Baker concludes that, while voting and holding office were restricted to men, women in the nineteenth century organized themselves into societies committed to social issues such as temperance and poverty. In other words, Baker contends, women activists were early practitioners of nonpartisan, issue-oriented politics and thus were more interested in enlisting lawmakers, regardless of their party affiliation, on behalf of certain issues than in ensuring that one party or another won an election. In the twentieth century, more men drew closer to women’s ideas about politics and took up modes of issue-oriented politics that Baker sees women as having pioneered.

Which of the following best describes the structure of the first paragraph of the passage?

[Question ID = 11518]

1. Two scholarly approaches are compared, and a shortcoming common to both is identified.

[Option ID = 46066]

2. An outmoded scholarly approach is described, and a corrective approach is called for.

[Option ID = 46067]

3. An argument is outlined, and counterarguments are mentioned.

[Option ID = 46068]

4. A historical era is described in terms of its political trends.

[Option ID = 46069]

Correct Answer :-

- Two scholarly approaches are compared, and a shortcoming common to both is identified.

[Option ID = 46066]

6) Read the following excerpt and answer the questions that follow:-

The new school of political history that emerged in the 1960’s and 1970’s sought to go beyond the traditional focus of political historians on leaders and government institutions by examining directly the political practices of ordinary citizens. Like the old approach, however, this new approach excluded women. The very techniques these historians used to uncover mass political behavior in the nineteenth-century United States - quantitative analyses of election returns, for example - were useless in analyzing the political activities of women, who were denied the vote until 1920. By redefining “political activity,” historian Paula Baker has developed a political history that includes women. She concludes that among ordinary citizens, political activism by women in the nineteenth century prefigured trends in twentieth-century politics. Defining “politics” as “any action taken to affect the course of behavior of government or of the community,” Baker concludes that, while voting and holding office were restricted to men, women in the nineteenth century organized themselves into societies committed to social issues such as temperance and poverty. In other words, Baker contends, women activists were early practitioners of nonpartisan, issue-oriented politics and thus were more interested in enlisting lawmakers, regardless of their party affiliation, on behalf of certain issues than in ensuring that one party or another won an election. In the twentieth century, more men drew closer to women’s ideas about politics and took up modes of issue-oriented politics that Baker sees women as having pioneered. The information in the passage suggests that a pre-1960’s political historian would have been most likely to undertake which of the following studies?

[Question ID = 11519]

1. An analysis of voting trends among women voters of the 1920’s

[Option ID = 46070]

2. A study of male voters’ gradual ideological shift from party politics to issue-oriented politics

[Option ID = 46071]

3. A biography of an influential nineteenth-century minister of foreign affairs

[Option ID = 46072]

4. An analysis of narratives written by previously unrecognized women activists

[Option ID = 46073]

Correct Answer :-

- A biography of an influential nineteenth-century minister of foreign affairs

[Option ID = 46072]

Topic:- JAT01 S2_P9

1) There are 4 sentences marked W, X, Y, Z. Choose from the given options the most logical sequence of these 4 sentences. W. At first appearance, it looks just like an ordinary, harmless, grasshopper. X. On a closer look, one can see its wings that enable it to fly long distances. Y. For farmers, one of the most dangerous insect pests is the locust. Z. A locust flies in a swarm with other locusts and attacks crops and destroys them.

[Question ID = 11521]

1. WXYZ [Option ID = 46078]
2. ZWXY [Option ID = 46079]
3. YZWX [Option ID = 46080]
4. XYZW [Option ID = 46081]

Correct Answer :-

- YZWX [Option ID = 46080]

2) There are 4 sentences marked W, X, Y, Z. Choose from the given options the most logical sequence of these 4 sentences. W. The current pack of 52 cards became the norm in the seventeenth century. X. The earliest reference to playing cards is found in tenth century China. Y. In the olden days these cards were used for playing games and telling fortunes. Z. They then appeared in Italy in the early fourteenth century.

[Question ID = 11522]

1. XZYW [Option ID = 46082]
2. ZYXW [Option ID = 46083]
3. YWZX [Option ID = 46084]
4. WXYZ [Option ID = 46085]

Correct Answer :-

- XZYW [Option ID = 46082]

Topic:- JAT01 S2_P10

1) Fill in the blanks with the most appropriate pair from among the 4 choices given.

The railway track ran _____ the road and _____ a car or two, I could not see any traffic when I travelled that way last summer.

[Question ID = 11524]

1. on, besides
[Option ID = 46090]
2. beside, besides
[Option ID = 46091]
3. by, apart
[Option ID = 46092]
4. over, beside
[Option ID = 46093]

Correct Answer :-

- beside, besides
[Option ID = 46091]

2) Fill in the blanks with the most appropriate pair from among the 4 choices given.

Even in the _____ Nordic countries, household chores are still not evenly distributed, but at least the language is changing. When a reporter asked a young Swedish father whether he helped with the child care, she was _____ for asking the wrong question. He did not "help, he did his share".

[Question ID = 11525]

1. elitist, reprimanded
[Option ID = 46094]
2. egalitarian, rebuked
[Option ID = 46095]
3. prejudiced, admonished
[Option ID = 46096]
4. nonpartisan, condemned
[Option ID = 46097]

Correct Answer :-

- egalitarian, rebuked
[Option ID = 46095]

Topic:- JAT01 S2_P11

1) A sentence has been given in Active or Passive Voice. Change the voice by choosing the best option from among the 4 choices given.

You must investigate the matter thoroughly and submit a report.

[Question ID = 11527]

1. The matter should be investigated thoroughly by you and a report submitted.

[Option ID = 46102]

2. The matter may be investigated thoroughly by you.

[Option ID = 46103]

3. The matter has to be investigated thoroughly by you and a report submitted.

[Option ID = 46104]

4. Please submit a report after investigating the matter thoroughly.

[Option ID = 46105]

Correct Answer :-

- The matter has to be investigated thoroughly by you and a report submitted.

[Option ID = 46104]

2) A sentence has been given in Active or Passive Voice. Change the voice by choosing the best option from among the 4 choices given.

Do you imitate the fashion of others?

[Question ID = 11528]

1. Is the fashion of others imitated by you?

[Option ID = 46106]

2. Do others imitate your fashion?

[Option ID = 46107]

3. Were you imitating the fashion of others?

[Option ID = 46108]

4. Others are imitated by you?

[Option ID = 46109]

Correct Answer :-

- Is the fashion of others imitated by you?

[Option ID = 46106]

3) A sentence has been given in Active or Passive Voice. Change the voice by choosing the best option from among the 4 choices given. T

hat man who is walking in front is known to me.

[Question ID = 11529]

1. That man who is walking in front of me has been known to me.

[Option ID = 46110]

2. Known to me is that man who is walking in front of me.

[Option ID = 46111]

3. Known by me is that man walking in front.

[Option ID = 46112]

4. I know that man who is walking in front of me.

[Option ID = 46113]

Correct Answer :-

- I know that man who is walking in front of me.

[Option ID = 46113]

Topic:- JAT01 S2_P12

1) The given pair of words has a specific relationship. Choose from among the given options the pair with a similar relationship.

ocean: whale

[Question ID = 11531]

1. mountain: waterfall

[Option ID = 46118]

2. river: boat

[Option ID = 46119]

3. jungle: elephant

[Option ID = 46120]

4. desert: oasis

[Option ID = 46121]

Correct Answer :-

- jungle: elephant

[Option ID = 46120]

2) The given pair of words has a specific relationship. Choose from among the given options the pair with a similar relationship.

amiable: truculent

[Question ID = 11532]

1. kindred: unrelated

[Option ID = 46122]

2. cold: freezing

[Option ID = 46123]

3. weather: climate

[Option ID = 46124]

4. trees: monkeys

[Option ID = 46125]

Correct Answer :-

- kindred: unrelated

[Option ID = 46122]

TutorialsDuniya.com